

Yale Station Stakeholder Working Group

Name	Affiliation
Aaron Johnson	Resident
Asst. Chief Dan Sadler	Denver Fire Department
Barbara Katona	Yale Station Apartments Resident
Carol Greenwald	Grace United Methodist Church
Cathy Valencia	Arapahoe County Public Works and Development
Cindy Ambs	Denver Streets Partnership
Councilwoman Kendra Black	City Council, District 4
Emily Holben Walker	Southside Unified Mayor's Pedestrian Advisory Committee (MPAC) University Hills Neighborhood Association
Graham Hollis	High Line Canal Conservancy
Jenny Neuhalfen	University Hills North Community
Jodi Escalante	University Hills North Community
Justin LeVeque	East Yale Station Resident
Kathy Gile	City Council, District 4
Liz Davis	University Hills North Community
Marcia Pittleman	Resident
Melanie Colletti	Ross Hills Library
Mike Wolf	La Fontana
Stan Poladsky	Mayor's Bicycle Advisory Committee (MBAC)
Walt Koelbel	Koelbel & Co.

Southmoor Station Stakeholder Working Group

Name	Affiliation
Andy Rockmore	Southmoor East Resident
Aylene McCallum	Southmoor South Resident
Becca Winslow	Southmoor East Resident, Southmoor PTA
Bob Engle	Southmoor Park East HOA (SPEHA) President
Brian Levitt	Southmoor Park West Resident
Brittany Morris Saunders	Southmoor South Resident, Southmoor School Parent
Councilwoman Kendra Black	City Council, District 4
Darren Malia	Southmoor Park East Resident
Gayle Stallings	Southmoor Resident
George Chelwick	Southmoor Resident
Jessica Vargas	Denver Streets Partnership
Kathy Gile	City Council, District 4
Katrina Wei	Southmoor Resident
Matt McCune	Southmoor East Resident
Paul Rosenthal	Southmoor Resident
Rob Kesselman	Wellshire East Resident
Shaun Waymire	Cambridge Condos Resident
Stan Poladsky	Mayor's Bicycle Advisory Committee (MBAC)
Suzy Stone	Southmoor East Resident

Please rank the following proposed project principles in order of importance to you:



Yale Station: What top 3 outcomes from this study do you think your community would like to see?

Safety, whether you walk, bike or drive. A bus or something that would take you to nearby places. Attractions that make this a hub (restaurants, stores, etc.)

1929665

1) Completion of improvements at Holly/Highline/Yale2) widen sidewalk on Yale east of I253) access to station from Vassar

Wider sidewalks. Bus stop improvements. Amenities at stations. Shelter from weather at station.

Safer walking on Yale. Easy access to Yale Station for folks who have mobility issues.

Better, safer, more enjoyable access to the station

Safe connections to and from the station

- Better bike/ped connection across I-25 and Yale Ave.- Better connect station to Highline Canal Trail- Improved transit service along Yale

Safer travel to and from our closest mobility station not using a car. Limit vehicle travel in the neighborhoods.

Convenient access to the station via walking, biking, and bus

Bus stop shelter. Weather shelter.

Family friendly amenities with good food and places for kids to playMore walkable access

More frequent bus service as my neighborhood is just past the 1 mile circle

Plans that get implemented...both short term/immediately and long term plans for adapting to future growth, equity

1.) Extend train platform south over Yale Ave 2.) Bridge / tunnel across I-25 to connect to High-line trail 3.) Sidewalks in Arapaho along Yale

Yale breakout room1) Reduce commute time from neighborhoods west of Yale/Colorado intersection.2) Safety/ease of vehicle alternate transport (bike/walk).3) Ease of access to points of interest near station. Ex. University Hills Shopping Center

1. SAFE & DIGNIFIED access to public transit/non-car trans options & community resources.2. Create a vibrant and safe community hub that promotes community & business.3. Install landscaping to slow traffic, offset greenhouse gas, mitigate flooding

Southmoor Station: What top 3 outcomes from this study do you think your community would like to see?

A more utilized and activated station

Safer and less complicated connections to TJ

People oriented plans and vision

More options for accessing Southmoor (convenience), more expedient options to access the station, feeling safer getting there.

Make the station feel like a part of the community rather than a parking lot.

A community type location where people can gather, dine and access transportation through the city

realistic ideas for activating the station for people not cars

increase the number of people who ride the train!

1 - more urban dynamic changing from traditional driving suburbs2 - easier access to public transportation3 - increase non-car usage

Neighbors don't feel like they have to drive to the station

Convenient access to and from the station

Make the neighborhood less car-only.

How we can best activate the areas at and surrounding Southmoor StationGet community support Identify what barriers exist to implementing this plan

Safe mobility options.Activate Southmoor station.Micro transit sounds great.

I think people would like it to have a plan that includes vision and connection. Something that is not piece meal like Hampden avenue

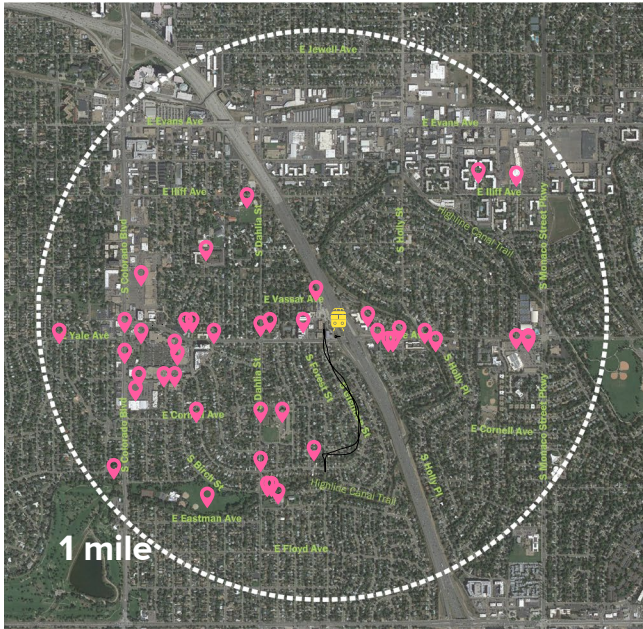
Safe connections to and from the station

Mobility hub, make it more of a mixed use destination, create a pocket park.

Yale Station Breakout Exercise

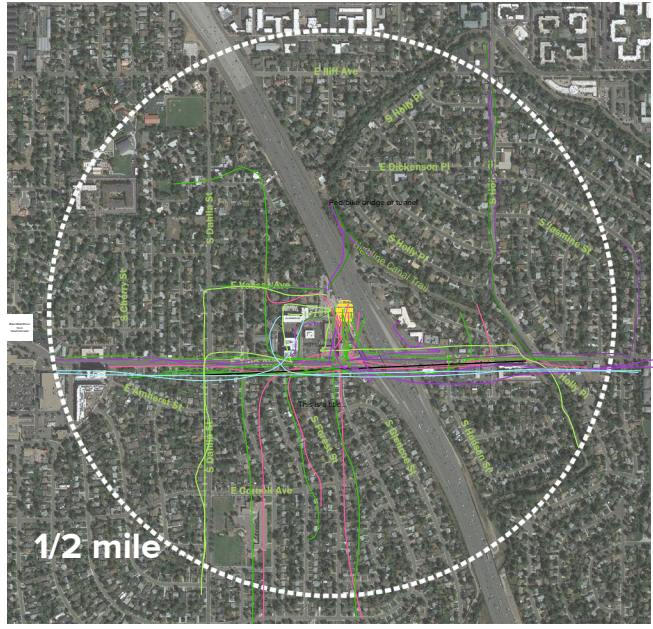
NEIGHBORHOOD HUBS

At what locations would you like to see mobility services that connect to Yale Station?



SPOKES/CONNECTORS

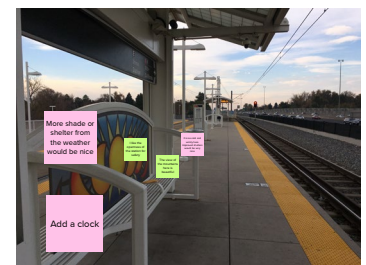
Where and how would you like to access Yale Station?



- Walk
- Bike
- Drive
- Bus/Shuttle

STATION EXPERIENCE

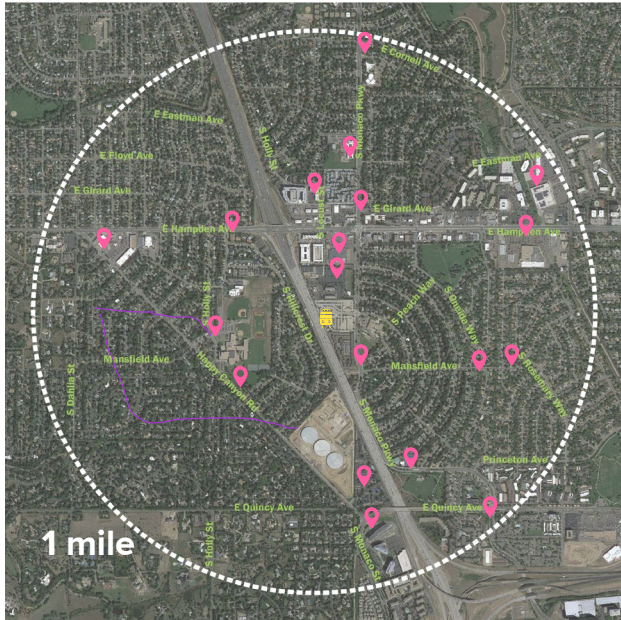
What station amenities would you like to see at Yale Station?



Southmoor Station Breakout Exercise

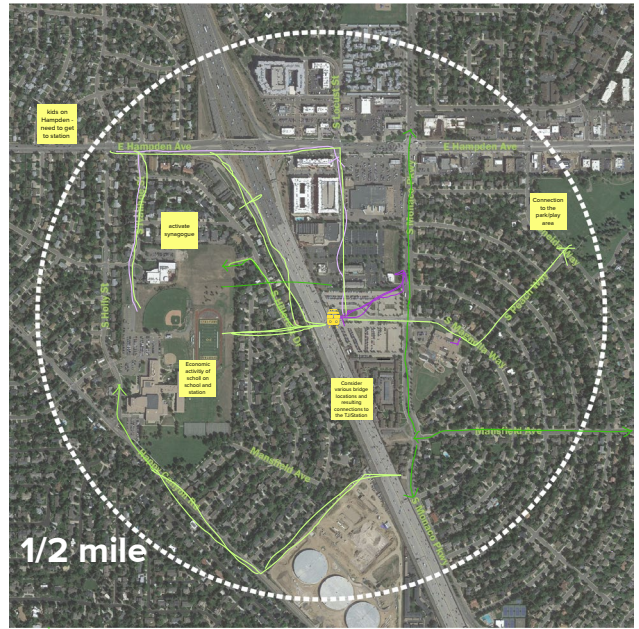
NEIGHBORHOOD HUBS

At what locations would you like to see mobility services that connect to Southmoor Station?



SPOKES/CONNECTORS

Where and how would you like to access Southmoor Station?



- Walk
- Bike
- Drive
- Bus/Shuttle

STATION EXPERIENCE

What station amenities would you like to see at Southmoor Station?

- Things I like
- Things I don't like





Southeast Denver Mobility Hubs Stakeholder Working Group

October 27th, 2020

Agenda

1. Introductions (10 min)
2. Project Overview & Background (20 min)
3. Project Principles (5 min)
4. Previous Studies & Key Findings (15 min)
5. Breakout Groups (35 min)

Introductions



Stuart Anderson
Transportation Solutions,
Project Manager



Kendra Black
Councilwoman,
District 4



Josh Mehlem
Apex Design, Consultant
Project Manager



Stephanie Ball
Apex Design



Carly Sieff
Fehr & Peers



Mark De La Torre
MIG

Other Project Team Members

- Daniel Hutton, Denver South TMA
- Chris Nevitt, City & County of Denver
- Ashlee Grace, City & County of Denver
- Paul DesRocher, RTD
- Allison Redmon, DRCOG
- Daniel Guimond, EPS

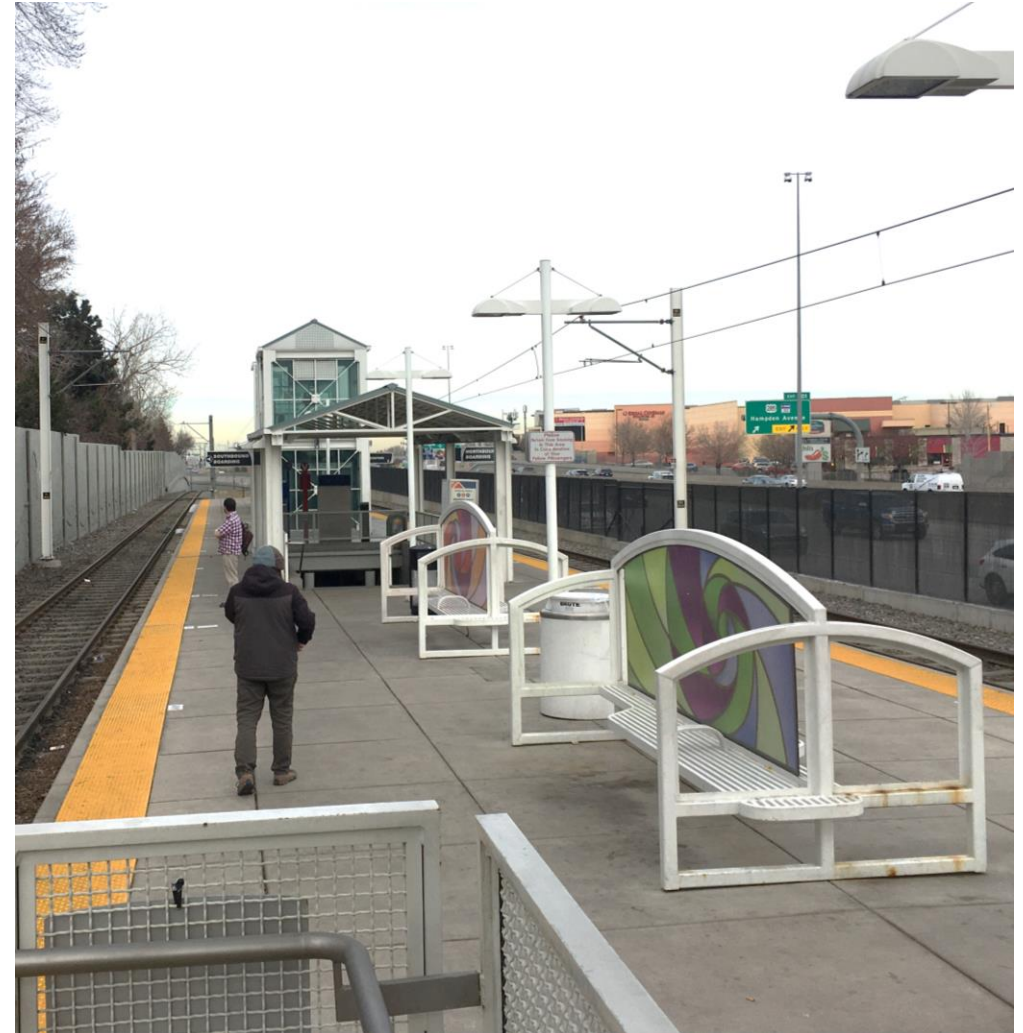
Yale Stakeholder Working Group

Kendra Black	Councilwoman, District 4
Kathy Gile	Council Aide, District 4
Cathy Valencia	Arapahoe County Public Works and Development
Emily Holben Walker	Southside Unified, University Hills Neighborhood Association, Mayor's Pedestrian Advisory Committee (MPAC)
Graham Hollis	High Line Canal Conservancy
Jenny Neuhalfen	University Hills North Community
Liz Davis	University Hills North Community
Jodi Escalante	University Hills North Community
Barbara Katona	Resident
Justin LeVeque	Resident
Aaron Johnson	Resident
Mike Wolf	La Fontana Condominiums
Walt Koelbel	Koelbel & Co.
Melanie Colletti	Ross Hills Library
Carol Greenwald	Grace United Methodist Church
Cindy Ambs	Denver Streets Partnership
Stan Poladsky	Mayor's Bicycle Advisory Committee
Asst. Chief Alex Paez	Denver Fire Department
Asst. Chief Dan Sadler	Denver Fire Department



Southmoor Stakeholder Working Group

Kendra Black	Councilwoman, District 4
Kathy Gile	Council Aide, District 4
Shaun Waymire	Resident
Paul Rosenthal	Resident
Matt McCune	Resident
Gayle Stallings	Resident
Katrina Wei	Resident
George Chelwick	Resident
Aylene McCallum	Resident
Andy Rockmore	Resident
Brittany Morris Saunders	Resident
Suzy Stone	Resident
Rob Kesselman	Resident
Darren Malia	Resident
Jessica Vargas	Denver Streets Partnership
Stan Poladsky	Mayor's Bicycle Advisory Committee



Grid-based Transit System with Hubs

- Large Central Hub



Denver Region Current

Investment, Supporting Land Use, Improved Roads



Grid Based Transit with Mobility Hubs

Converting

- DU Station
- CO Station
- Cherry Creek

Designing

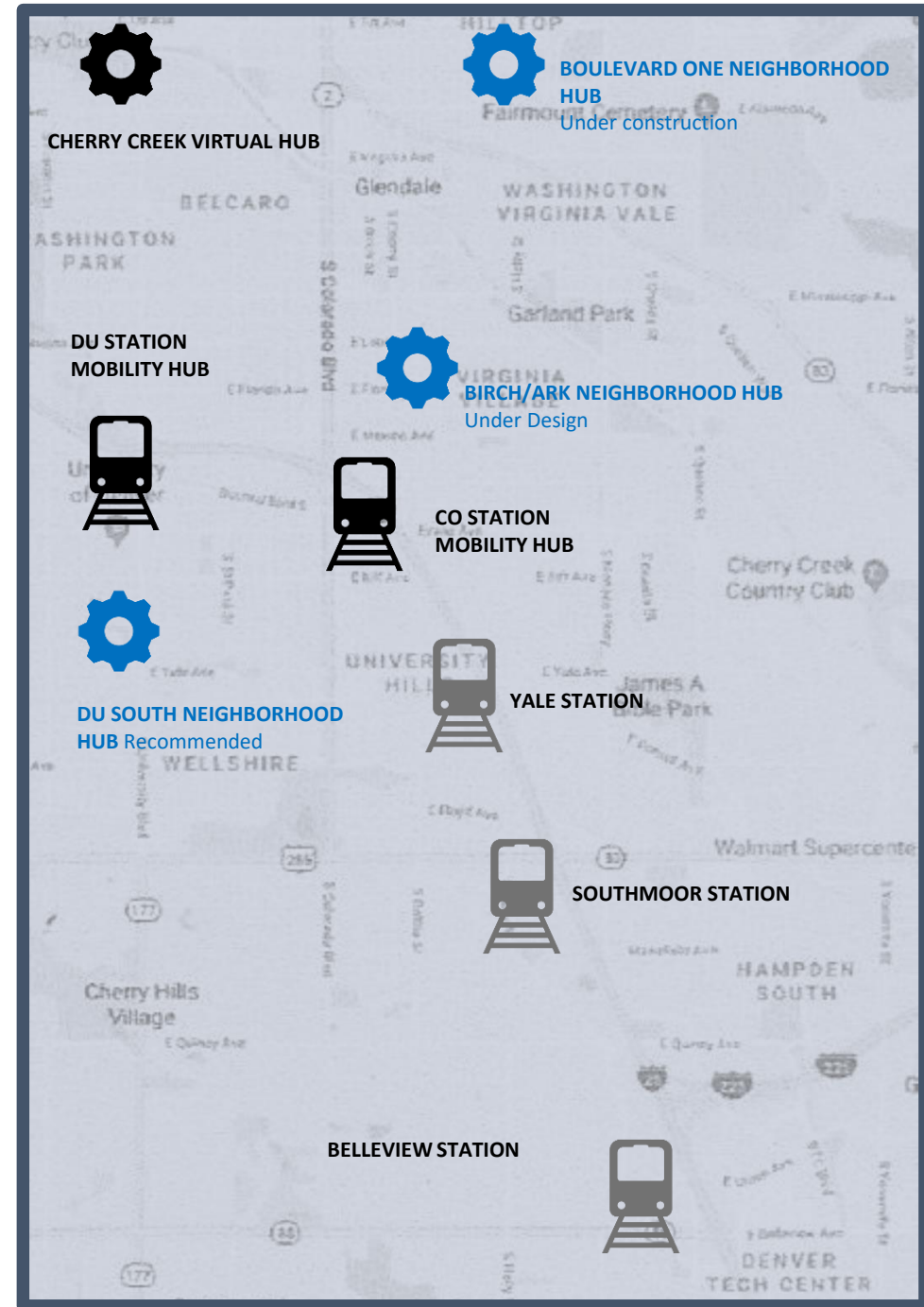
- Lowry/BLVD One
- Birch & Arkansas

Recommending

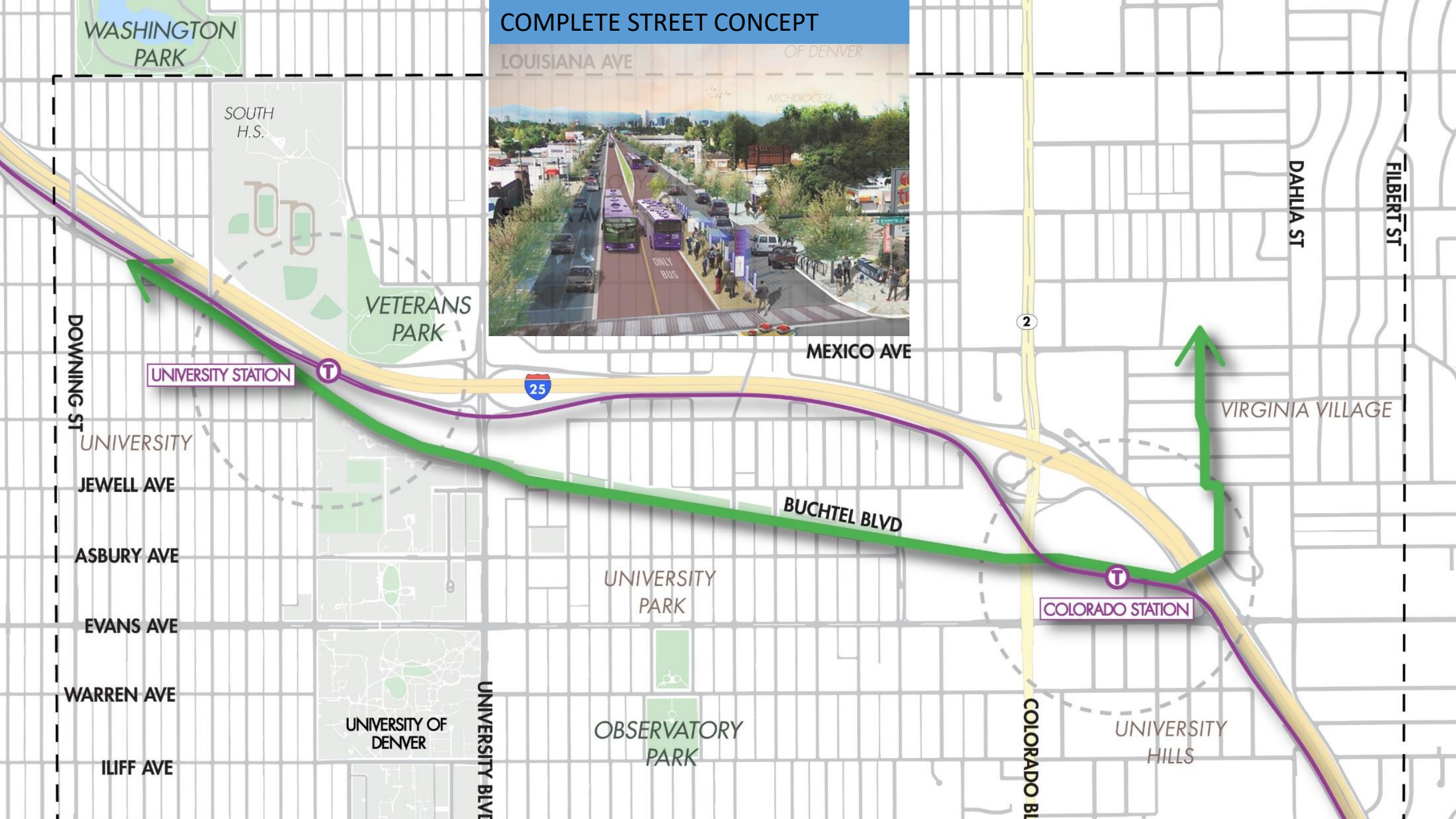
- DU South

Studying

- Yale Station
- Southmoor Station
- Belleview Station



COMPLETE STREET CONCEPT



WASHINGTON PARK

SOUTH H.S.

VETERANS PARK

UNIVERSITY STATION

25

MEXICO AVE

BUCHTEL BLVD

UNIVERSITY PARK

COLORADO STATION

OBSERVATORY PARK

UNIVERSITY OF DENVER

UNIVERSITY HILLS

VIRGINIA VILLAGE

DAHLIA ST

FILBERT ST

DOWNING ST

UNIVERSITY

JEWELL AVE

ASBURY AVE

EVANS AVE

WARREN AVE

ILIFF AVE

UNIVERSITY BLVLT

COLORADO BL

Core Elements

Urban Village and Mobility
Hub

Sense of Place

Safety and security

Seamless integration

Use of advanced technologies

Partnerships

Equitable mobility

FOCUSED ON USER EXPERIENCE!

University of Denver LRT Station





TDM + TOD + FLM

- University of Denver LRT Station Mobility Hub
 - Make station more accessible for cyclists, pedestrians and demand-response shuttle
 - Secured \$8.4M in infrastructure improvements
 - Looking at wrapping garage in micro-housing



TESTING MICRO- TRANSIT

- Operated City Shuttle serving Cherry Creek as a connector to nearby neighborhoods
- Created micro-transit circulator from DU Station
- Sought grant funding for a driverless shuttle
-



Colorado Station

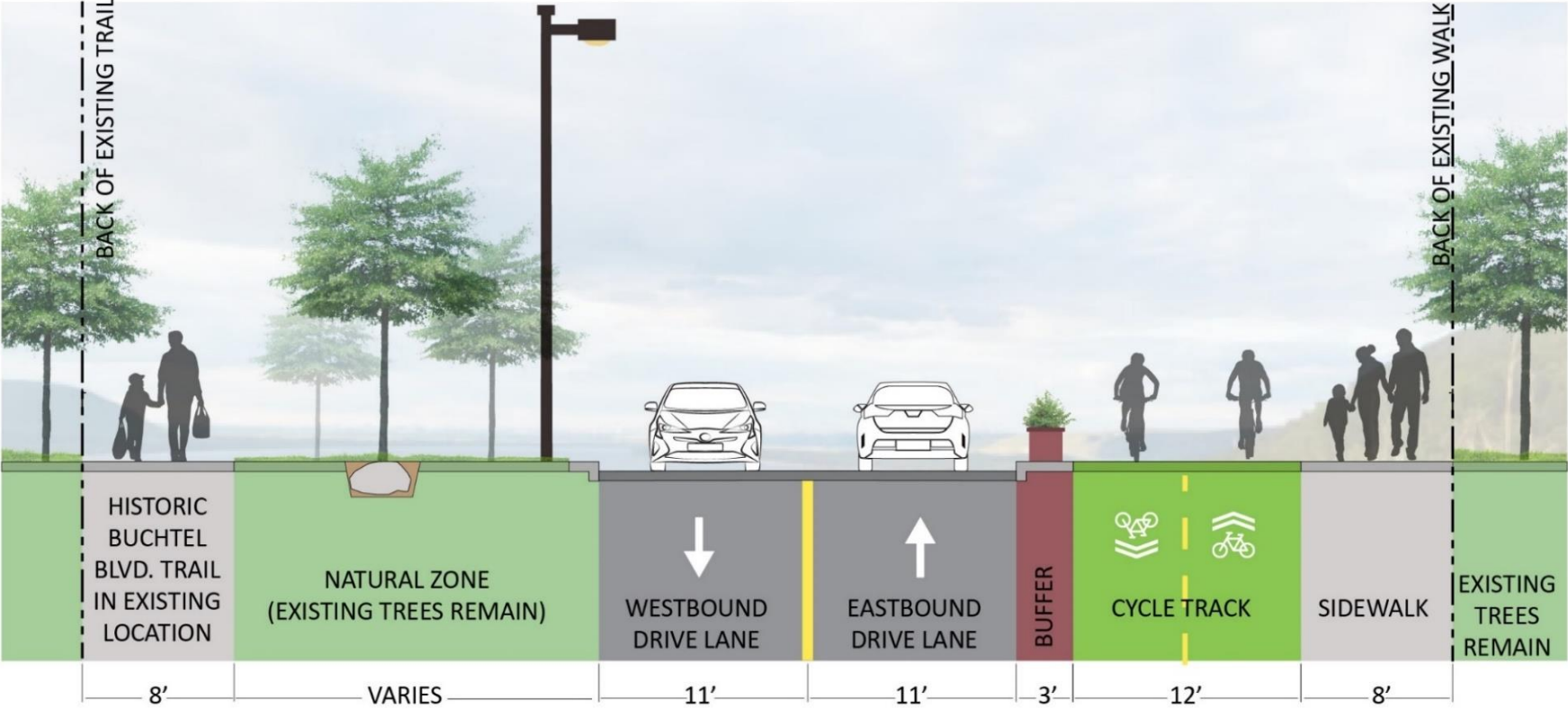


MAIN STREET DESIGN

- Multi-modal access
- Cover Trench
- L-shaped main street
- Separate bikes, pedestrians, cars and buses
- Soft connection into neighborhood



RE-IMAGINE BUCHEL BLVD.

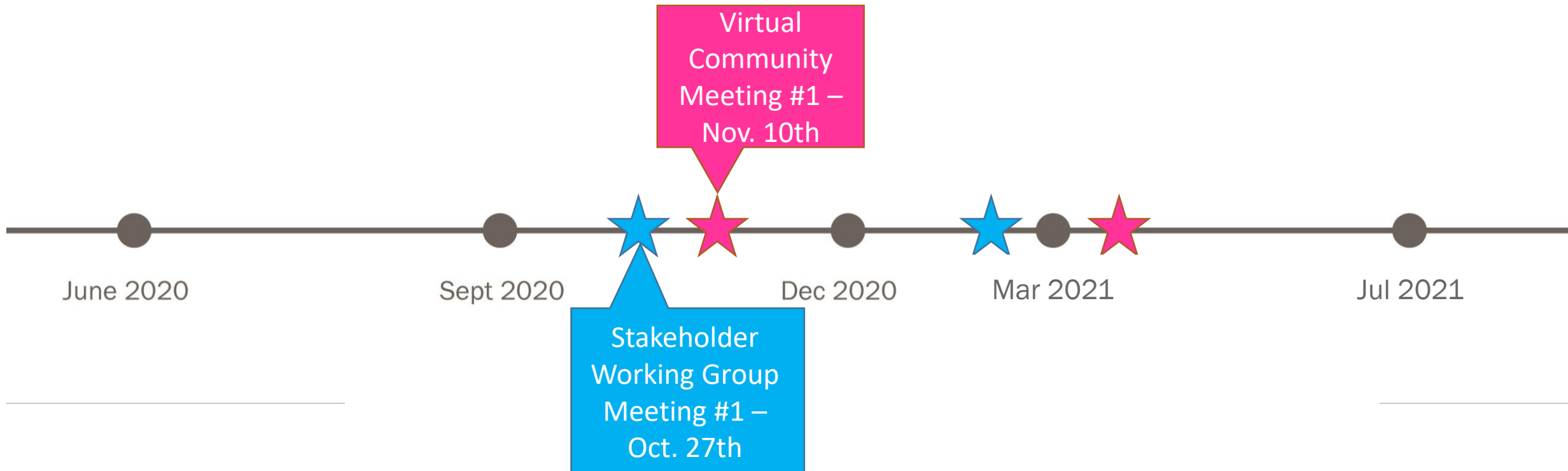


SECTION D - BUCHEL BLVD. LOOKING EAST - EAST OF ST. PAUL STREET
 1" = 10'

Project Progress



Project Progress



Stakeholder Charter

- 1. Act as a representative of the broader community and on behalf of their organization**
 - a. Not individual interests
- 2. The role of the Workgroup is critical to the success of the project**
 - a. Community ambassadors
 - b. Input vs. decision-making
 - c. Explain and set expectations for how input is used
 - d. Preview and help refine information before we take it to the broader public
 - e. Provide a direct link between the community and the project team
 - f. Share accurate information and gather feedback

Stakeholder Charter

3. Commit to the entire process

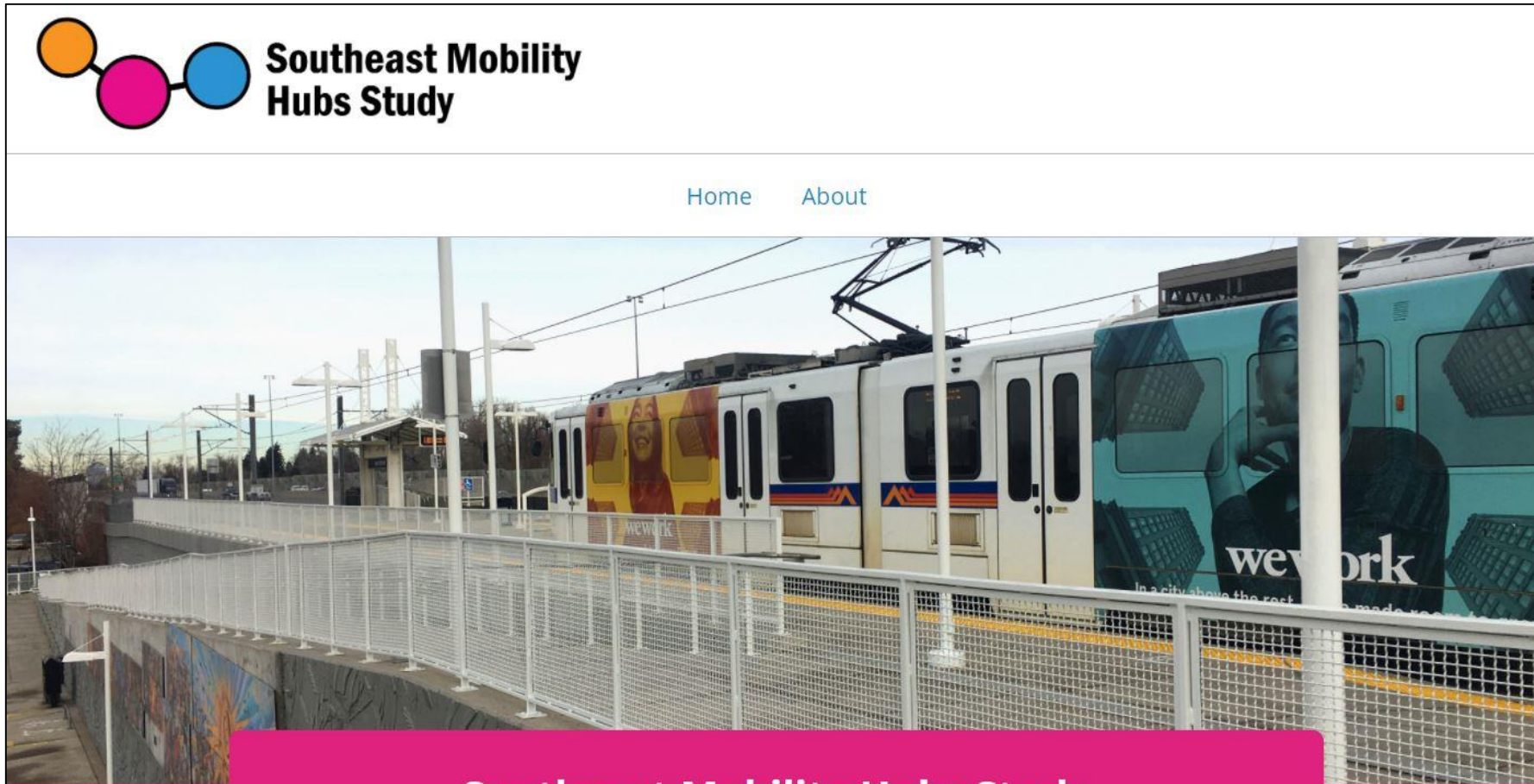
- a. Two - three meetings in the project (will go into summer of 2021)
- b. Each meeting will be approximately 2-hours in length
- c. There may be “homework” in-between meetings

4. Identify the right representative and an alternate

- a. Make sure you have an alternate that can attend in your absence
- b. Email Kathy.gile@denvergov.org if you cannot attend

Project Hub & Engagement Opportunities

bit.ly/semobilityhubs



Southeast Mobility Hubs Study

Home About

Southeast Mobility Hubs Study

The Southeast Denver Mobility Hubs Study focuses on three RTD light

Outreach Package

- Promotional flyer
- Email/newsletter content
- Social media content

WE WANT TO HEAR FROM YOU!



Now is the time to plan our post COVID-19 transit future to reduce traffic congestion, improve air quality and enhance our use of public transit.

Do you live or work near the Yale Light Rail Station or Southmoor Light Rail Station?

Tell us how you use transit today, how you plan to use it in the future and share your ideas on how to get others out of single occupancy vehicles by participating in the Southeast Mobility Hubs Study for the Light Rail Station nearest you!

Yale and Southmoor Station Community Meeting

Tuesday, November 10 from 5:30 - 6:30 PM

Meeting information can be found at

bit.ly/semobilityhubs

or by scanning the QR code.



STAY IN THE KNOW

Transportation
Solutions 
transolutions.org

 **KENDRA BLACK**
DENVER CITY COUNCIL DISTRICT 4
720-337-4444 | denvergov.org/district4



Project Principles Poll

Previous Plans: Yale Station

Big Wins

- Sidewalk widening on Yale Avenue east of Fairfax Street



In Progress

- Signal at Yale Avenue & E Yale Circle
- Underpass for the High Line Canal at Yale Avenue/Holly Street

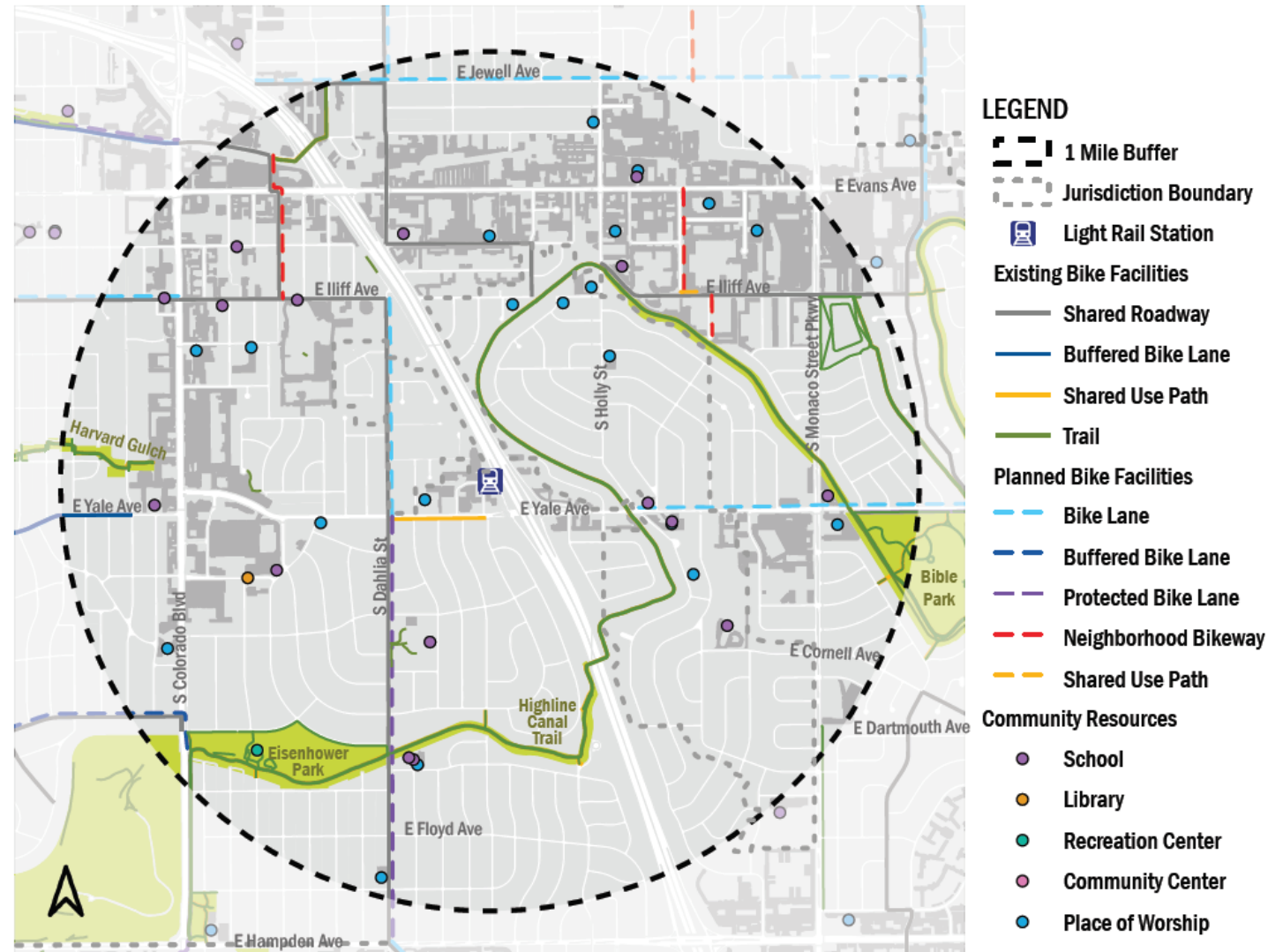


Previous Plans: Yale Station

Outstanding Recommendations

- Sidewalk upgrades east of I-25 on Yale Avenue
- Bicycle facilities on:
 - Dahlia Street south of Yale Avenue (Protected Bike Lanes)
 - Dahlia Street north of Yale Avenue (Bike Lanes)
 - Yale Avenue west of Holly Street

Yale Station Existing Biking Network Map



Key Findings: Yale Station

1. Few safe bicycle connections to the station



Yale Ave & I-25 Interchange



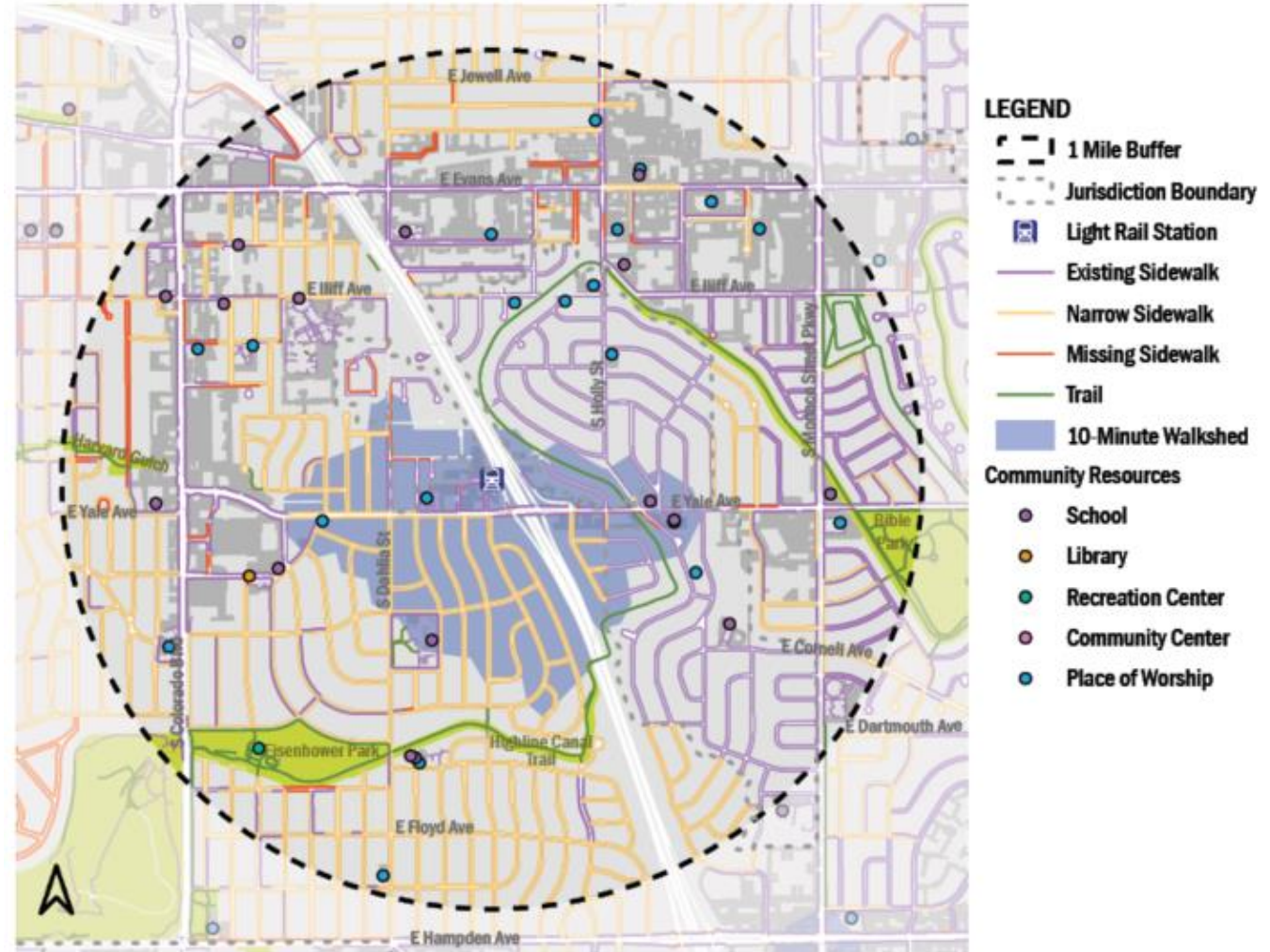
Dahlia St & Girard Ave

Key Findings: Yale Station

1. Poor neighborhood connectivity, especially if walking or biking
2. I-25 acts as a barrier to the east neighborhoods

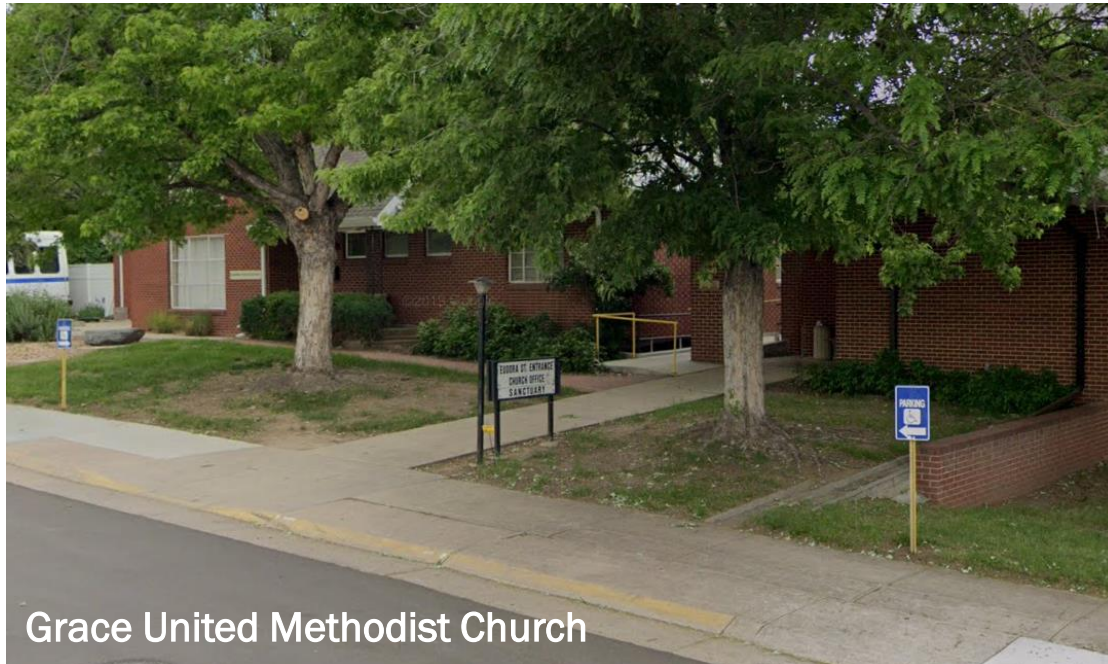


Yale Station Existing Walking Network Map



Key Findings: Yale Station

1. Lack of roadway connectivity to the station acts as a barrier to the north neighborhoods
2. Potential for alternative access points



Yale Station Amenities Map



Key Findings: Yale Station

1. Lack of activity at station
2. Are station amenities meeting the needs?



Yale Station Platform



Yale Station Looking West

Previous Plans: Southmoor Station

Big Wins

- Medians on Hampden Avenue from Monaco to Tamarac
- Signal improvements and pedestrian refuges in the medians at the intersections of Oneida, Poplar and Tamarac, and at the crossing at 7500 E Hampden Avenue

In Progress

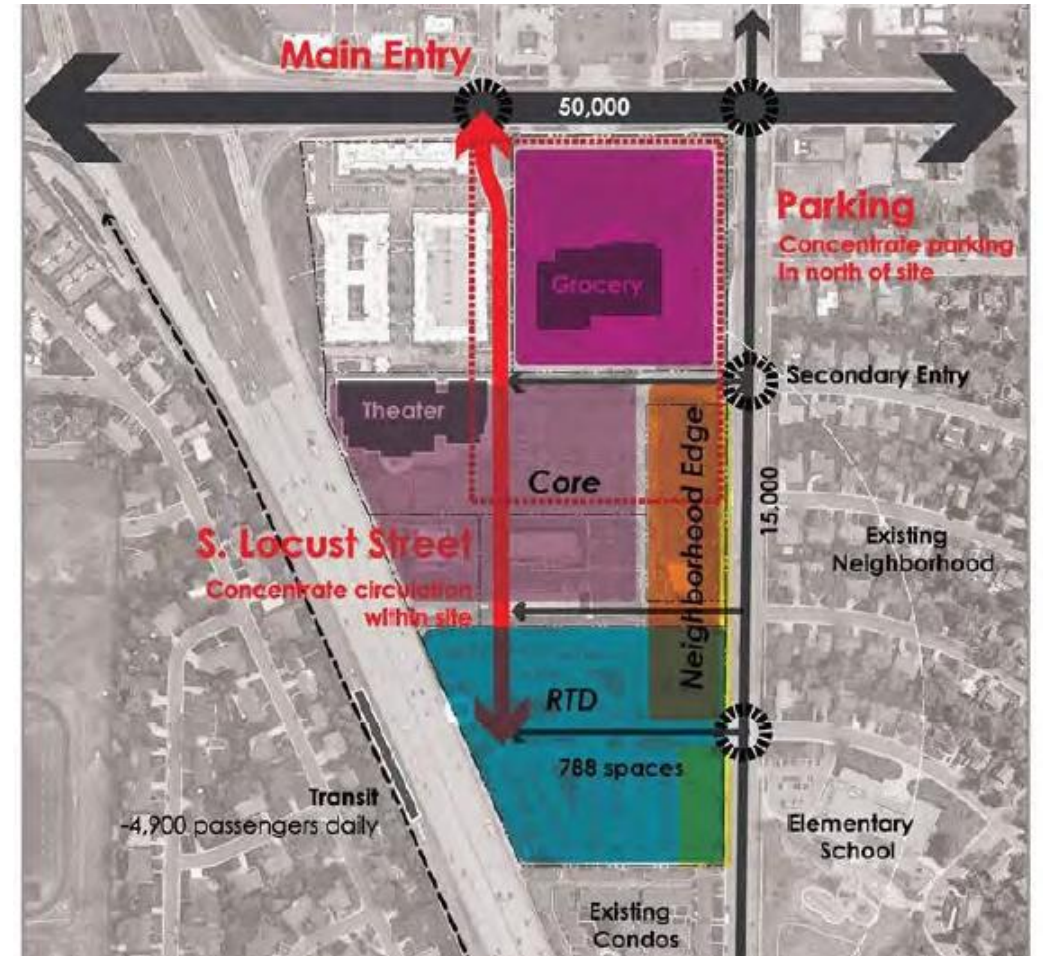
- Pedestrian refuge island and intersection safety improvements at Hampden Avenue and Locust Street



Previous Plans: Southmoor Station

In Progress

- The Southmoor Visioning Study created a station area plan with enhanced access points and updated land use framework



Source: Southmoor Station Area Visioning

Previous Plans: Southmoor Station

In Progress

- The ULI Southmoor Station TAP & Southmoor Visioning Study determined type of desired retail and residential development



Previous Plans: Southmoor Station

Outstanding Recommendations

- Hampden Avenue Bus Rapid Transit
- Narrowing Hampden Avenue between I-25 and Holly Street
- Enhanced bus stop at Hampden Ave and Monaco Parkway

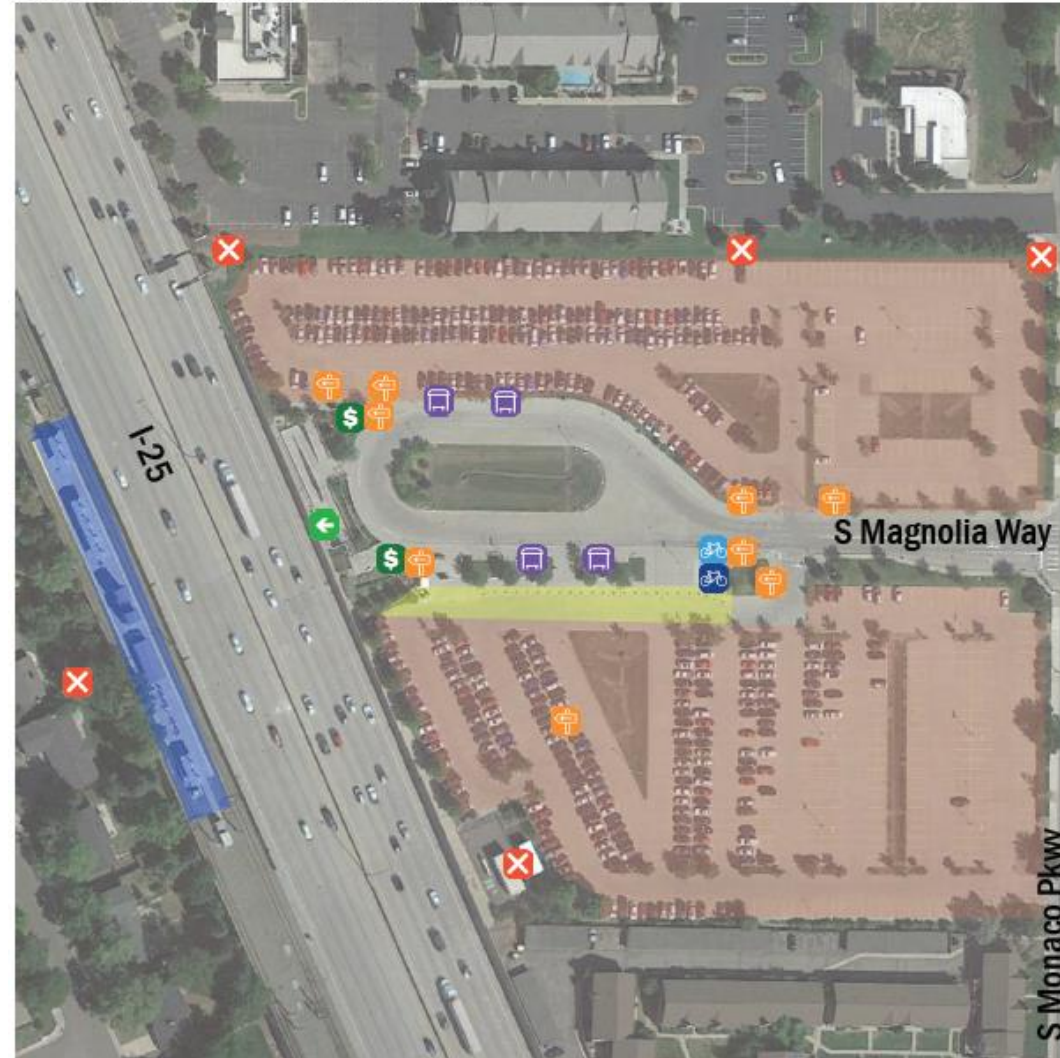


Key Findings: Southmoor Station

1. Parking lots create barriers



Southmoor Station Amenities Map



LEGEND

-  Access Point
-  Barrier
-  Bus shelter
-  Wayfinding
-  Payment Machine
-  Bike Rack
-  Bike Locker
-  RTD Parking
-  Station Platform
-  Kiss-n-Ride Area

Southmoor Station Key Findings

1. Lack of active uses near station
2. Opportunity for more infill along Hampden Ave



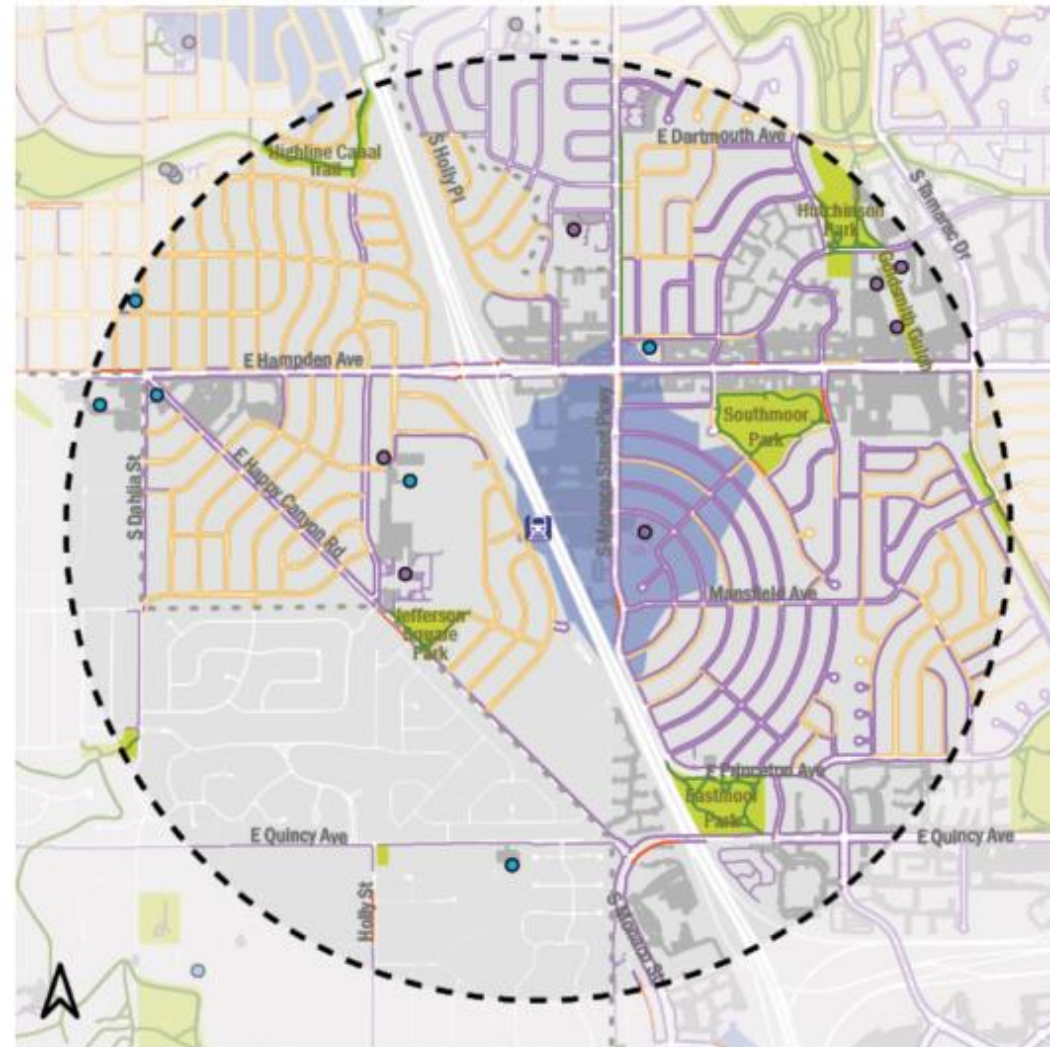
Source: Southmoor Station Area Visioning

Southmoor Station Key Findings

1. No access west of interstate



Southmoor Station Existing Walking Network Map



- LEGEND**
- 1 Mile Buffer
 - Jurisdiction Boundary
 - Light Rail Station
 - Existing Sidewalk
 - Narrow Sidewalk
 - Missing Sidewalk
 - Trail
 - 10-Minute Walkshed
- Community Resources**
- School
 - Library
 - Recreation Center
 - Community Center
 - Place of Worship

The background features a network of white lines connecting various white circular nodes of different sizes. Some nodes are larger and serve as primary vertices, while others are smaller and scattered throughout the space. The lines form a complex, interconnected web that spans the entire frame.

Breakout Groups



Project Outcomes Poll

Next Steps

- Distribution of Community Meeting promotional materials
- Site tours complete by Sunday November 8th
- Virtual Community Meeting on Tuesday November 10th
- Next Stakeholder Meeting in February to review draft project recommendations